



Queen Mary  
University of London

# School of English and Drama Undergraduate Guide



[www.sed.qmul.ac.uk](http://www.sed.qmul.ac.uk)





Any section of this publication is available in large print upon request. If you require this publication in a different accessible format we will endeavour to provide this where possible. For further information and assistance, please contact: [hr-equality@qmul.ac.uk](mailto:hr-equality@qmul.ac.uk); Tel: +44 (0)20 7882 5585.

The information given in this publication is correct at the time of going to press. The College reserves the right to modify or cancel any statement in it and accepts no responsibility for the consequences of any such changes. For the most up-to-date information, please refer to the website [qmul.ac.uk](http://qmul.ac.uk)

This prospectus has been printed on environmentally friendly material from well-managed sources.





# Contents

---

## About us

Why choose English and Drama at Queen Mary	5
Your study	6
Frequently asked questions	8
Things you'll love about us	11
A week in the life of our students	13

## Life at Queen Mary

Living in London	15
East End haunts	17
Funding and student support	19
Alumni stories	21
Your notes	22

**RUSSELL**  
**INTERNATIONAL**  
**EXCELLENCE**  
**GROUP**

## Courses available in the School of English and Drama:

Drama W400  
English Q300  
English and Drama QW34  
English and Film Studies QW36  
English and French QR31  
English and German RQ23  
English and Hispanic Studies RQ43  
English and History QV31  
English and Russian QR38

English Literature and Linguistics QQ13  
English with Creative Writing QW11  
Film Studies and Drama WW46  
French and Drama WR41  
German and Drama WR42  
Hispanic Studies and Drama WR44  
Russian and Drama WR75





# Why choose English and Drama at Queen Mary?

---

## Admissions

We have a flexible and ‘contextualised’ admissions policy. This means that we look at your application and your attainment in the context of your individual circumstances and background, and in the context of the average grades achieved by students at your school or college.

We also invite many applicants who receive our conditional offer to an interview. Those who show good potential in the interview will receive the award of an unconditional offer.

## Excellence in Teaching

We’ll offer you high quality teaching across all our undergraduate degrees. Our students rate us highly in the annual National Student Survey (97% satisfaction rate in Drama; 91% satisfaction rate in English in the 2016 Survey).

## Choice

We offer a wide choice of modules that allow you to shape your studies around your interests. The first year is usually based around compulsory modules which build your key skills. When you get to your second and final years you create your own programme of study, allowing you to specialise in a particular area, or learn across a range of approaches and topics.

## Expert Staff

Our staff are world-class academics who will work with you to make learning challenging and exciting. Have a look at our website for a full listing of staff, along with their profiles. These include what they teach, and details of recent books they’ve published.

## Study Abroad

There are opportunities to spend either a semester abroad, or a whole year. We’ve just introduced new four year degrees, which mean you can spend the whole of the third year at one of our partner institutions, before returning to Queen Mary for your final year.

You can either apply to take the four year degree through UCAS, or transfer onto the four year degree when you’re in your second year.

## Research

We have a world class reputation for research. Drama was ranked first, and English fifth in the most recent Research Excellence Framework (2014). This means that you will be taught by and work closely with internationally recognised researchers at the forefront of their discipline.



# Your study in Drama

---

Drama, English and Drama, Film Studies and Drama, Drama and French, Drama and German, Drama and Hispanic Studies, Drama and Russian

A Drama degree at Queen Mary is very different from a qualification you'd get from an acting or training school. You will conduct a mixture of theoretical and practical work, with practice being used as a critical tool that complements theoretical investigations and allows you to ask questions and make discoveries about the world we live in. You will learn how to investigate the ways in which drama and performance can be used in different settings – art galleries, schools, prisons, warehouses, museums and the street, as well as theatres. Through a grounded exploration of the act of performance, you are encouraged to become a scholar-artist.

## First Year

Two examples of modules that all first year Drama students take are London/Culture/Performance, and Practices.

London/Culture/Performance will equip you with skills for analysing performance (as distinct from written text), and will facilitate your critical and productive engagement with London and the vast cultural resources it has to offer.

These are fundamental to the university-level study of Drama in London, and will serve you throughout your Drama degree and beyond. Practices will support you in the transition to university-level study, and will make links across your first year modules helping you to negotiate the first year (and beyond) successfully.

## Second and Final Year

When you move into your second and final year, you start to create your own programme of study and can explore the aspects of performance that intrigue you most. We change our optional modules from year to year.

Here are some examples of modules we've offered recently:

- Theatre Writings
- London Performance Now
- Race and Racism in Performance
- Shakespeare after Shakespeare
- Choreographic Performance
- Offstage London

See our website for a full list of the optional modules we offer.



# Your study in English

---

English, English and Drama, English with Creative Writing, English and Film Studies, English and History, English Literature and Linguistics, English and French, English and German, English and Hispanic Studies, English and Russian

Taking an English degree at Queen Mary encourages you to read in different ways than you've read before. You'll become a thoughtful, thorough, and active reader who thinks intelligently both about what people have written (and are still writing), and about what it means for us to read and interpret their work.

As you read and interpret texts, you will also become a writer, someone who can find new insights into familiar texts, challenge your own and other people's preconceptions, and articulate your ideas clearly and forcefully.

## First Year

Examples of modules you take in your first year are Reading, Theory and Interpretation: approaches to the study of English Literature, and English in Practice.

Reading, Theory and Interpretation introduces you to some of the central problems and influential and challenging theories involved in the interpretation of literature.

You also take English in Practice which aims to support you in the transition to university-level study through a series of induction events, masterclasses, and workshops.

## Second and Final year

When you move into your second and final year, you start to create your own programme of study and can explore the aspects of literature that intrigue you most. We change our optional modules from year to year to ensure that you are being taught the most current and exciting topics in the field.

Students have recently taken:

- Dickens in the City
- Renaissance Literary Culture
- Modernism
- Late Victorian Literature
- Medieval Troy
- Writing South Africa: Race, Nation and Text
- Contemporary American Popular Culture

See our website for a full list of the optional modules we offer.



# Frequently Asked Questions

---

## How and when do I apply?

You apply for all our degrees via UCAS. Use the Queen Mary website to search for the degree name and code you're interested in and a link will take you straight to the UCAS website. If you are applying to start in 2018, UCAS can accept applications from 6 September 2017.

## What are your entry requirements?

See the course finder on the Queen Mary website for full details of all our entry requirements (A-Level, IG, BTEC, Access HE, EPQ and contextualised admissions).

## What happens when you get my application?

When Queen Mary receives your application we consider your predicted grades, your personal statement and the supporting reference in the context of your individual and educational circumstances.

This means that even if your predicted grades do not match our entry requirements we may make you a conditional offer. Once you receive your offer, you may be invited to select one of a number of possible interview dates between December and March. If you attend this interview with one of our lecturers and show good potential you will receive the award of an unconditional offer.

All you have to do then is make us your firm choice through UCAS and your conditional offer becomes an unconditional offer. The interview is combined with other events such as taster sessions, and you'll meet our staff and current students.

## What if my results don't meet my conditional offer?

We know that exams sometimes don't go as well as expected and, for this reason, we can often exercise discretion in the confirmation of our places once exam results come out. This allows us to accept you if you don't meet all the terms of our conditional offer, but nonetheless can demonstrate a strong overall profile that gives us confidence you will perform well here. If you have questions or concerns about your grades and your place please do get in touch with us.

## How do I get accommodation?

Queen Mary has one of the largest residential campuses in London at Mile End. Living on campus is fun, safe and convenient – and a great way to experience our vibrant East End location. Read more about the Student Village on our website. As soon as we make you an offer you're eligible to apply for a place in a Queen Mary residence. We advise you to do this as soon as you can after receiving your offer. If you have questions you can call Residential Services on: 020 7882 6474.

---

## Do I need to prepare before I start my degree?

We will be in touch on or just after results day to make suggestions about reading you can do before you arrive. And we'll let you know if there are any books we recommend you buy, or plays to see.

## When do I start my course?

Your course begins with Moving in Weekend and Welcome Week. If you apply for 2018 entry, Welcome Week starts on Monday 17 September 2018. We hold a series of events and activities in the School to welcome you and make sure you start to feel at home. Our activities are part of a wider Queen Mary welcome programme. Teaching commences in the week beginning Monday 24 September 2018.

## Is there much to do in Mile End?

Yes! There's so much going on around Mile End, both on and off campus. We're close to an amazing array of diverse culture, museums, restaurants, cinemas, clubs and shops. Our Secret SED Google Map [bit.ly/secretsedmap](http://bit.ly/secretsedmap) is a great place to start finding some hidden gems you might not have realised were nearby. Our campus has recently been ranked as the safest Russell Group university in London, according to The Complete University Guide.







# Things You'll Love About Us

---

**Inventive assignments** The majority of assessment for Drama and English is coursework. This includes essays, logbooks, performances, broadsheet style articles, lecture-demonstrations, critical reviews, written exercises, practical essays, bibliographic exercises, seminar presentations, and learning journals.

Our students tell us they welcome the chance to research and develop ideas in their written and practical work. We provide you with lots of feedback so each assignment helps you develop skills of research, analysis and the presentation of ideas and argument. In English you might have to sit one or more exams.

**Our Staff and Teaching** There are over 70 members of academic staff in the School of English and Drama. Even though we're quite large we are a friendly and supportive School. We have an innovative approach to teaching, so as well as the traditional lecture, the majority of our teaching takes place in smaller seminar groups.

**Ground breaking research-led teaching** Our staff are active researchers and they bring the latest ideas and theories into the classroom. They have developed an exciting research culture that includes innovative subject areas such as feminism and queer theory, cultural histories of performance, performing personae, live art, poetry and poetics, postcolonial studies and world literatures, and applied and

socially-engaged performance.

**Creative Writing** Our new English with Creative Writing degree starts this year, with our first cohort of students. They'll be working with Professor Patrick Flanery, who's the acclaimed author of *Absolution*, *Fallen Land*, and *I am no one*.

**Artists and Writers in Residence** We bring the world of contemporary performance into the classroom with workshops from leading artists. Recent visitors include: Lucy McCormick (Soho Theatre), Sam Curtis Lindsay (Hackney Showroom) and Lyn Gardner (The Guardian).

**Student Societies** Our amazing and diverse mix of students create incredible experiences on and off campus through societies and with the friends they make at Queen Mary. Popular among our students are Queen Mary Theatre Company, English Society and contributing to student media including Cub Magazine, Peach, and The Print Newspaper.

**Festivals and Work Opportunities** There are opportunities to work on our famous Peopling the Palace(s) festival, and work with our in-house arts organisations, such as Project Phakama.





# A week in the life of our students

---

English	Drama
Monday: I wrote a blog post for the CUB magazine.	Monday: Rehearse for our group performance and then practical workshop on improvisation.
Tuesday: Seminar on Chaucer. Never thought I'd get into him!	Tuesday: Explained to my mother about about the weird and wonderful workshop with Professor Jen Harvie on new styles of performance at the National Theatre.
Wednesday: See West Ham play at the Olympic Stadium.	Wednesday: Rehearse with the Queen Mary Theatre Company. Watching Variety Night gave me great ideas!
Thursday: Lecture on Victorian literature then on to the cabinet of curiosity that is Sir John Soane's Museum.	Thursday: See a controversial new show at the Royal Court Theatre. Class discussion will be interesting!
Friday: Class field trip to Shakespeare's Globe with Professor Warren Boutcher.	Friday: See my personal adviser to chat through the latest ideas I've read about.
Saturday: Work at Drapers Bar and Kitchen on campus & then go out in Hackney Wick with my Queen Mary mates.	Saturday: Go to Brick Lane market to find props for our group performance.
Sunday: Lie in and read some great books!	Sunday: Rest and relax by the canal with friends and a picnic.





# Living in London

---

## Accommodation

Queen Mary has hundreds of rooms for first years on campus (subject to availability), and our halls are amongst the cheapest across London.

Over 85% of our accommodation is offered to students at rates that are below the Mayor of London's affordable rent targets. That makes us one of the cheapest university providers in London, cheaper than KCL, UCL, City, or Westminster.

We also have great partnerships with local landlords to help you find affordable private rented accommodation.

**[residences.qmul.ac.uk](https://residences.qmul.ac.uk)**

## Budgeting

Money (that is, having enough of it!) can be a major concern, and there are sources of help at Queen Mary regarding finance and how to manage on a tight budget.

Our Advice and Counselling Service has a useful website with information about the cost of living in London and money saving ideas.

Top tips include:

- Join NUS Extra which gives you access to lots of discounts in shops, restaurants, cinemas and travel
- Cook for yourself rather than eating out regularly. There are some great recipe ideas on the Queen Mary Sustainability website; Green Mary.
- When it's safe to, walk or cycle to save money on transport. Mile End is part of a growing network of cycle lanes and cycle superhighways (see the Transport for London website for maps and guides)

**[welfare.qmul.ac.uk](https://welfare.qmul.ac.uk)**





# East End Haunts

---

## Walk this Way

Walk to these London gems in 15 minutes or less:

- **Victoria Park**, Hackney  
Home of LOVEBOX and Field Day festivals this area has recently been voted by Time Out as #1 Place to Be in London.
- **Genesis Cinema**, Stepney Green  
A progressive cinema that has run a Directed by Women season, and screens classics from a wide range of genres
- **The Pizza Room**, Mile End  
Hand-made pizza to die for - the ultimate treat after a day at Queen Mary.
- **The Mile End Art Pavilion**, Mile End  
Across the canal from Queen Mary campus lies a home for contemporary art set in a lake-side vista.
- **Wilton's Music Hall**, Tower Hill  
The world's oldest surviving grand music hall now showcases groundbreaking theatre, live music and cabaret.

## On your Bike

Bike or tube your way to these London gems in 30 minutes or less:

- **Libreria Bookshop**, Shoreditch  
London's most gorgeous bookshop.
- **British Library**, Kings Cross  
Heaven for book lovers and a great place to study.
- **Whitechapel Gallery**, Whitechapel  
A hip art gallery on Queen Mary's doorstep.
- **Live Art Development Agency**, Hackney Wick  
The UK's home of alternative performance.
- **The Yard Theatre**, Hackney Wick  
A theatre and night club space in the shadow of the Queen Elizabeth Olympic Park.

See more on our Secret East London Map:  
<http://bit.ly/secretsedmap>





The friendly support team at Queen Mary love helping you



# Funding and Student Support

---

## Scholarships and Bursaries

There are a number of sources of funding available, and there's more information on the Queen Mary website (Fees and Funding). If your household income is less than a certain amount (less than £25,000 , or between £25,000 and £42,600 in 2017-2018), you will automatically be assessed for the Queen Mary Bursary, or the Queen Mary and Westfield Bursary when you apply to Student Finance England.

## Student Support

We want you to get the most out of your time here with us and achieve your full potential. There are teams across Queen Mary, and in the School of English and Drama, to advise and support you throughout your degree. Here's a summary of the student services and support available.

- **Personal adviser:** here to discuss your academic progress and guide you through your degree.
- **Advice and Counselling:** includes the Disability and Dyslexia Service, welfare advice, mental health support, wellbeing and funding advice.
- **Careers:** we arrange support for your career right from the start of your degree, and the QMUL Careers Service provides skills training sessions, and the opportunity to book individual careers appointments.
- **The Language Centre:** even if you're not studying one of our joint degrees with a language, you have the opportunity to apply for a language bursary to take a non-credit bearing module in your second or final year.
- **Libraries:** as well as the Queen Mary Library at Mile End, you have access to the University of London's central library of more than two million books, periodical and eResources at Senate House in Bloomsbury.
- **PASS student mentors:** PASS stands for Peer Assisted Study Support, and it is a course-based mentoring scheme, run for students by students. All first year students have access to a mentor and you can approach them for friendly, informal advice in a relaxed environment.
- **Qmotion:** stay fit and healthy at Queen Mary's health and fitness centre.
- **Queen Mary Students' Union:** as well as sports clubs and a wide range of societies, the SU offers academic advice and representation.
- **Royal Literary Fund Fellows:** each year we have a number of professional writers who offer free tutorials to help you with your written assignments.





# Alumni Stories

---

We are proud that our graduates go into a range of successful careers, or postgraduate education and our degrees will open up a range of possibilities to you.

**Here are six examples of what some of our graduates have gone on to do:**

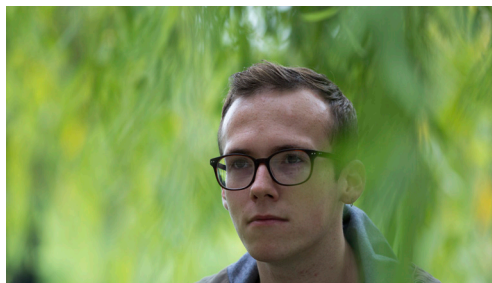
- **Stephanie Capps** (Drama) is working as Events Manager at English National Ballet who bring world-class ballet to the widest possible audience.

- **Tierney Cowap** (English) used her part-time job while studying with us to work her way up to become a PR Assistant at Oliver Bonas, a leading UK fashion and gifts retailer.

Read her top five tips for starting in the world of PR on our blog: [bit.ly/sedprtips](http://bit.ly/sedprtips)

- **Edie Edmundson** (Drama) was key puppeteer in Emma Rice's incredible production of *The Little Match Girl* at Shakespeare's Globe (pictured left).

Read our blog post online to learn more about Edie's journey: [bit.ly/sededie](http://bit.ly/sededie)



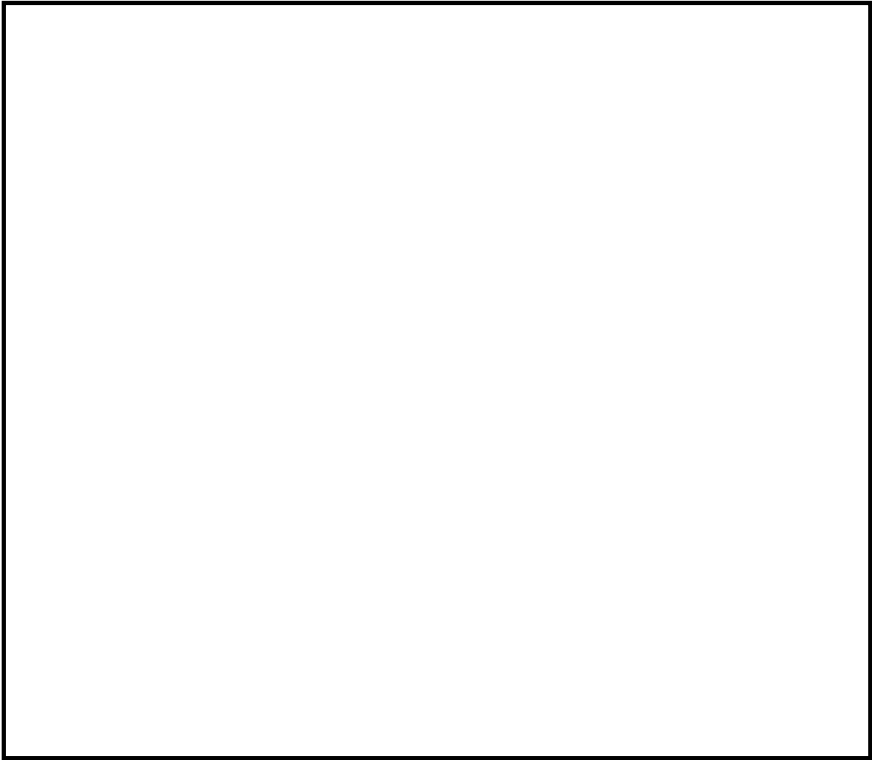
- **Sarah Garnham** (English) is working as Publicity Assistant at Ebury Publishing a division of Penguin Random House one of the world's biggest publishing groups. Follow her on Twitter for what she's up to: [@sarah\\_garnham](https://twitter.com/sarah_garnham)

- **Dominic Madden** (English) is the CEO of Electric Brixton a hugely successful music and night club venue in South West London.

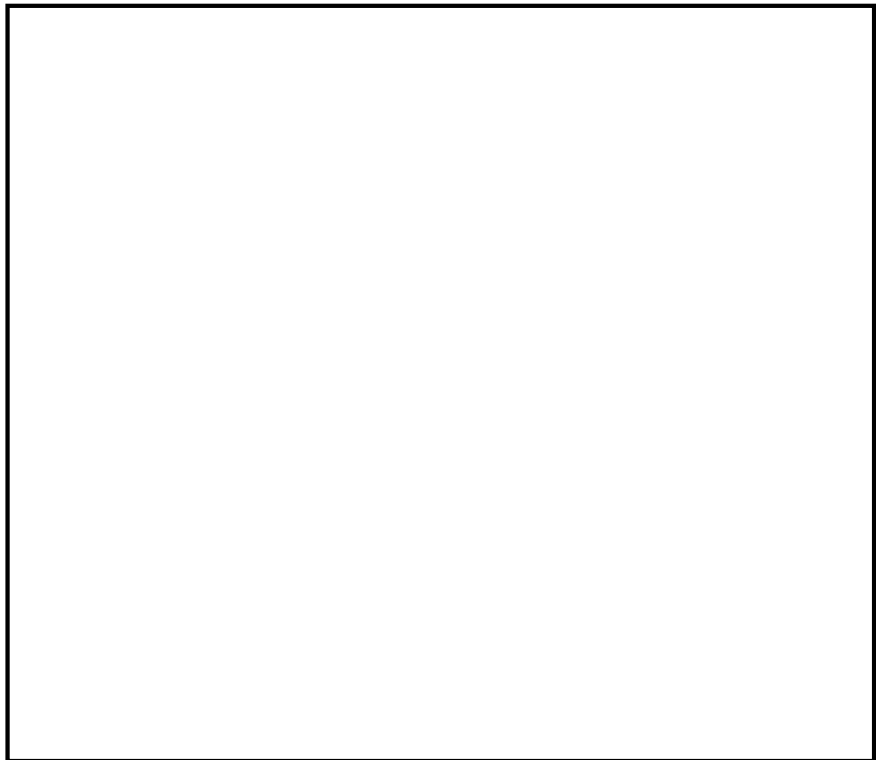
- **Charlie Pullen** (English) is returning to the School of English and Drama to take a PhD in English. Charlie did his undergraduate and MA degrees with us before spending a year working as a paid Graduate Ambassador at University College London (pictured above).



# Space for doodles, notes and ideas



Four sets of horizontal lines for writing, each consisting of a solid top line, a dashed middle line, and a solid bottom line.



---

---

---

---

---

---

---

---

---

---



Queen Mary  
University of London

**For further information contact:** Admissions Team  
School of English and Drama  
Tel: +44 (0)20 7882 8571  
email: [sed-admissions@qmul.ac.uk](mailto:sed-admissions@qmul.ac.uk)  
twitter: @qmulshed  
**[www.sed.qmul.ac.uk](http://www.sed.qmul.ac.uk)**